



RECP #: 752604

RECORDED 5/8/2019 AT 1:07 PM BK# 2620 PG# 1646
Debra K. Lee, CLERK OF LARAMIE COUNTY, WY PAGE 1 OF 1

STATE OF WYOMING CORNER RECORD

(In compliance with the CORNER PERPETUATION AND FILING ACT, Wyoming Statutes, 1997 Section 33-29-140, et. seq., and the Rules and Regulations of the Board of Registrations for Professional Engineers and Professional Land Surveyors)

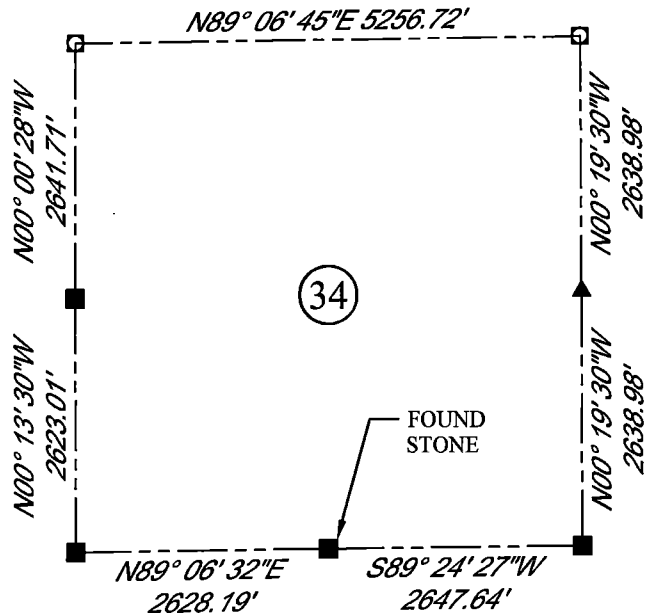
NORTH QUARTER CORNER SECTION 3, T. 18 N., R. 63 W., 6TH P.M., LARAMIE COUNTY, WYOMING

GLO: SET A GRANITE STONE 12X8X6 8 IN. DEEP. MARKED ON NORTH FACE 1/4. FOR 1/4 SEC. COR.

FOUND: FOUND FIRM SET STONE 4" ABOVE SURFACE, GRANITE STONE, 10X7X5 WITH A 1/4 ON N. FACE. SET AN ALUMINUM CAP ACCESSORY ON SOUTHWEST FACE OF STONE.



SCALE: NONE
NORTH DETERMINED BY
G.P.S OBSERVATIONS



LEGEND:

- FOUND BLM CAP
- FOUND USFS CAP
- FOUND STONE
- FOUND PRIVATE MONUMENT
- ◆ CALCULATED POSITION
- ▲ SET MONUMENT (LS10245)
- SECTION LINE

DATE OF FIELD WORK: 10/03/2018 OFFICE REFERENCE: 746049 ----

CROSS INDEX DIAGRAM

	1	2	3	4	5	6	7	8	9	10	11	12	13	14	15	16	17	18	19	20	21	22	23	24	25
A																									
B																									
C			6			5				4					3					2					1
D																									
E																									
F																									
G			7			8				9					10					11					12
H																									
J																									
K																									
L			18			17				16					15					14					13
M																									
N																									
O																									
P			19			20				21					22					23					24
Q																									
R																									
S																									
T			30			29				28					27					26					25
U																									
V																									
W																									
X			31			32				33					34					35					36
Y																									
Z																									

WOOD
2615 AVIATION DRIVE
SHERIDAN, WY 82801
PH: 307-675-6400

wood.

THIS CORNER RECORD WAS
PREPARED BY ME OR UNDER
MY DIRECTION AND
SUPERVISION,
SEAL AND SIGNATURE

